



Watson for Clinical Trial Matching

What if you could optimise your clinical research across the spectrum—from the point of care to the clinical trial office?

Understanding the obstacles

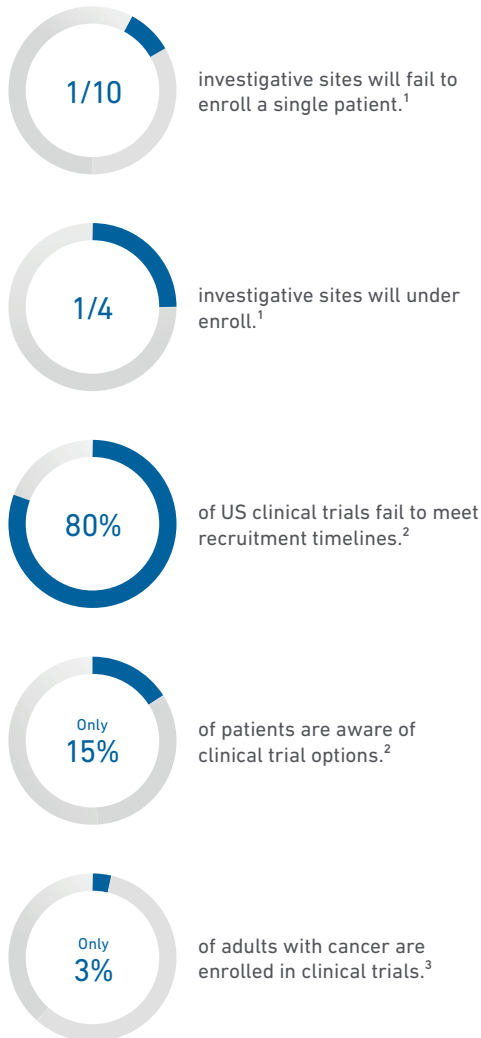
Finding clinical trials for patients is challenging and time consuming, especially considering the large quantity of unstructured patient data, an abundance of available trials, and complex protocol criteria to consider.

Clinicians have no easy way to search across eligibility criteria of relevant clinical trials for their patients. Similarly, clinical trial offices are not enabled to efficiently identify potential patients for their trials. These inefficiencies remain a barrier to increasing enrollment rates and can hinder research advancement and patient care.

A cognitive solution Understanding the obstacles

Finding clinical trials for patients is challenging and time consuming, especially considering the large quantity of unstructured patient data, an abundance of available trials, and complex protocol criteria to consider.

Clinicians have no easy way to search across eligibility criteria of relevant clinical trials for their patients. Similarly, clinical trial offices are not enabled to efficiently identify potential patients for their trials. These inefficiencies remain a barrier to increasing enrollment rates and can hinder research advancement and patient care.



1. Schuler, Peter and Buckley, Brendan. Re-Engineering Clinical Trials: Best Practices for Streamlining the Development Process. 2015.
2. "Clinical Trial Educator Program—A Novel Approach to Accelerate Enrollment in a Phase III International Acute Coronary Syndrome
3. Trial,"Clinical Trials, 2012. <http://www.ncbi.nlm.nih.gov/pubmed/22426648>
4. EDICT. 2008. The EDICT Project: Policy Recommendations to Eliminate Disparities in Clinical Trials. Houston, TX: EDICT Project. Feasibility study with Highlands Oncology Group and Novartis.

A cognitive solution

IBM® Watson™ for Clinical Trial Matching enables clinicians to more easily and quickly find a list of clinical trials for an eligible patient, and in the clinical trial office, find patients that are potentially eligible for any of the site's trials. The improvement in screening efficiency and more effective patient recruitment can help increase clinical trial enrollment targets and opportunities to offer patients the option of a clinical trial for treatment.

The benefits of Watson for Clinical Trial Matching

For the clinician:

Save time spent on patient screening.

Eliminate the need to manually sort through and analyze complex enrollment criteria.

Scale clinical trial treatment options across patient populations. Ensure all potential trials are considered for your patient.

For the clinical trial coordinator:

Efficiently identify patients for open trials at your site.

Process batches of patients and assess eligibility for the trials at your site.

Promote visibility into patient recruitment and trial management processes.

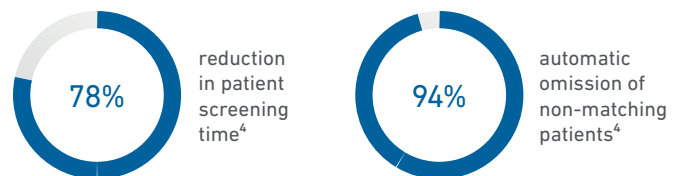
Access a workbench for every trial to manage patient recruitment processes and share your work with colleagues.

Core capabilities

- Ingests structured and unstructured patient EMR data, and with natural language processing, creates a detailed profile of key clinical findings for the patient to compare to trial eligibility criteria.
- Ingests site clinical trials from www.clinicaltrials.gov and understands their clinical data and criteria for inclusion/exclusion.
- Quickly provides the clinician with a ranked list of relevant trials for a patient as well as the trials from which they were excluded.
- Provides clinical trial coordinators with Tracker—a workbench to help manage and track patients through the recruitment process and share progress across networks in real time.
- Continually reviews the available patient population for potential eligibility for all trials at the site and updates the Tracker boards.

A significant increase in operational efficiency

In a technology feasibility study with Highlands Oncology Group and Novartis, Watson for Clinical Trial Matching achieved:



Want to learn more about the impact of AI on clinical trials?
ibm.co/clinical-trial-matching



All enquiries : [Sarah Hilton](mailto:sarah.hilton@scm.com)
sarah.hilton@scm.com